

SMART
FLOOR



Open up for interaction

SMARTFLOOR INTERACTIVE FLOOR

SmartFloor interactive floor

The only multi-interactive floor on the market that allows you to control the image with movement, a IR pen and an interactive robot. We offer a dedicated mobile stand, which allows you to move it freely to different places, plus its adjustment allows you to adjust the image to the available surface. At the start, the user receives as many as 92 applications, consisting of more than 650 worksheets. Thanks to the convenient motioncube.io platform, you can expand your panel with more applications.



MOTIONCUBE

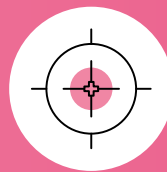
Want to gain access to even more educational games and activities? No problem! By activating your account in the MotionCube store, you will have the ability to freely browse, filter and purchase new educational apps!





4 TYPES OF INTERACTION

Play on the interactive floor in 4 different ways – use movement to break balloons by jumping on them, draw on the floor with IR pens, program with tablets, and learn to navigate the roads with a robot!



AUTOMATIC CALIBRATION

Fully automated, the process takes up to 10 seconds. The camera adjusts itself to the projection and does not require manual marking of projection points.



PHONE CONTROL

Control the floor with your smartphone – select games, browse packs, and switch playlists easily and conveniently.



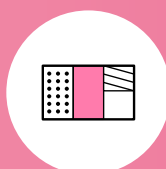
PERSONALIZED PROFILES

Add your games to your favorites, view your most played games, and check the history of your selected apps.



CREATE PLAYLISTS

Create your own sets of automatically switchable games, and the floor will change them in a timely manner.



4 DIFFERENT GAMES AT THE SAME TIME

Divide your interactive area into 4 separate boards, letting the users play the games that they chose.



Specifications*

DISPLAY PARAMETERS

- ✓ XGA resolution
- ✓ brightness of 3500 ANSI lumens
- ✓ image display directly on the floor - without the use of mirror reflection technology

PHYSICAL PARAMETERS

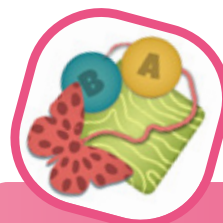
- ✓ built-in 10 W speaker (optional Mobile Audio 2x20 W)
- ✓ HDMI output
- ✓ RJ-45 output and Wi-Fi module
- ✓ ability to mount on wall, ceiling or mobile stand (optional)

FUNCTIONALITY

- ✓ 4 interactive pens included - 3 short pens and 1 telescopic pen
- ✓ 70 movement games and 22 games using the interactive pen
- ✓ supported interface languages: Polish, English, Italian, Spanish, Ukrainian
- ✓ access to free updates via the Internet
- ✓ demo versions of applications - possibility to test all games before purchase
- ✓ help center - built-in database of advice, answers and reported problems

WARRANTY AND SERVICE

- ✓ 2 year warranty (1 year warranty for projector lamp)
- ✓ technical service support, by phone and online
- ✓ full user manual in Polish language



REVALIDATION WITH HAPPY STONES

One of the additional packages that you can use when teaching children with SEN. The proposed exercises stimulate, in particular, visual perception, logical and abstract thinking and perceptiveness. To be purchased through the built-in Motioncube store.



 /SmartFloorEduPL

 /smart_floor

 /www.smartfloor.edu.pl

*Updated version of the specification can be found at smartfloor.edu.pl