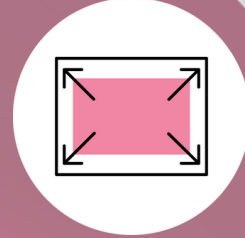
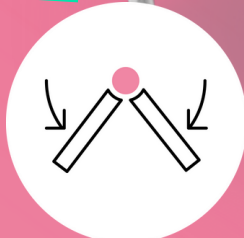
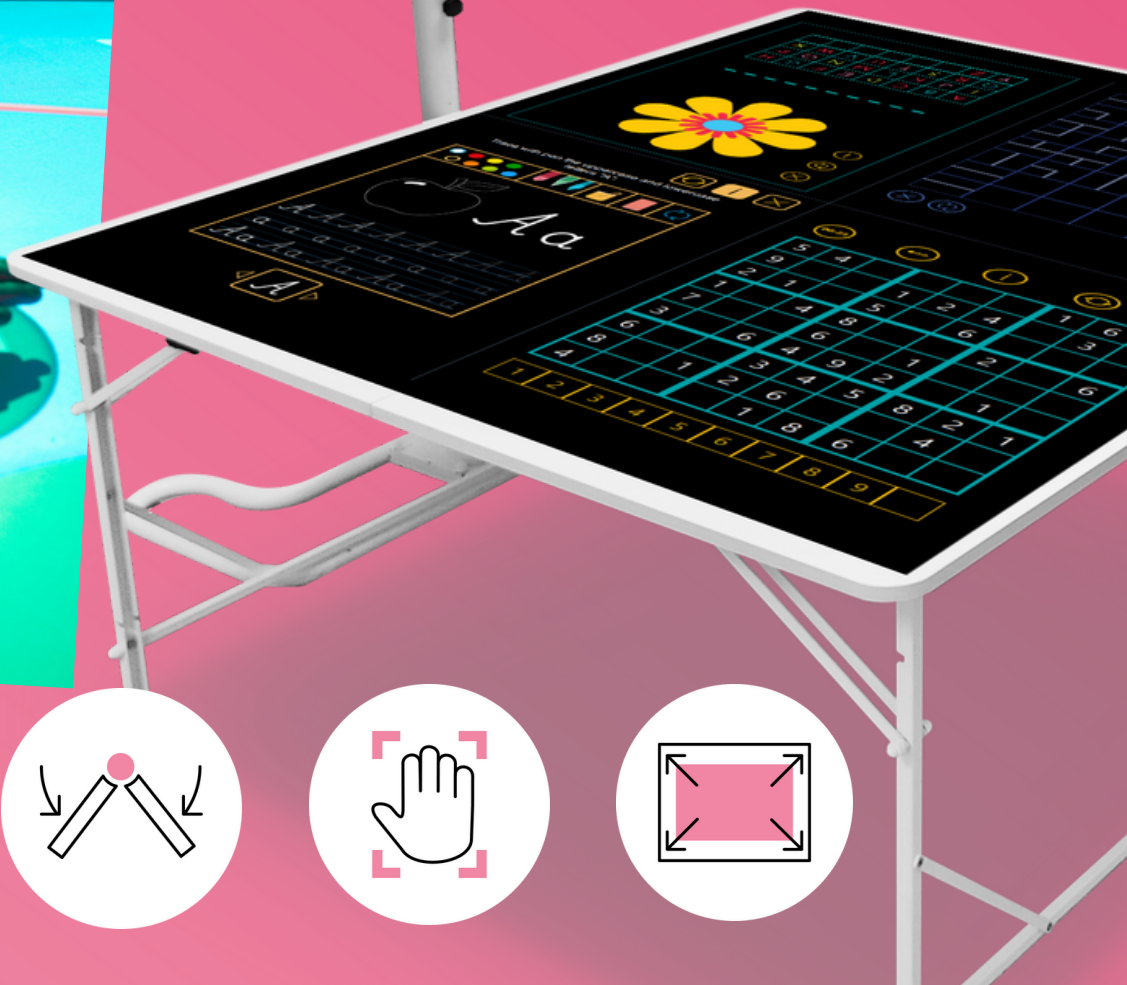


SmartFloor 2in1

TABLE, FLOOR AND MORE!



SmartFloor 2 in 1 - table and interactive floor in one!

Kit includes:

- 1 x SmartFloor Mobile interactive floor
- 1 x dedicated projection table 160 x 150 cm
- 1 x dedicated Arcade Game Champions app pack
- 5 x starter packs of apps: For fun, Head First, Little steps, Colours power, Balls & goals
- 1 x mobile stand holder

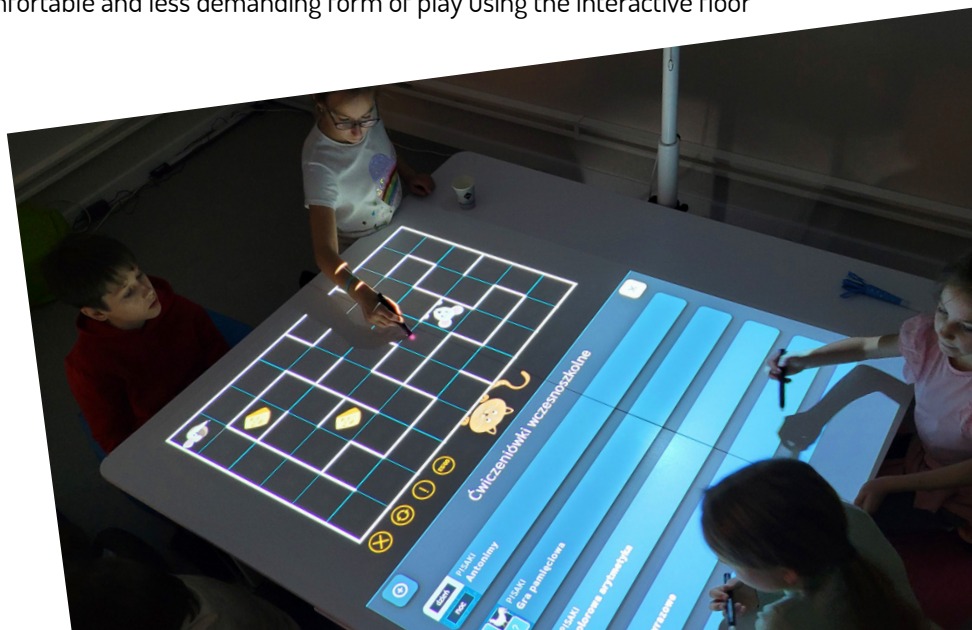
A revolution in the Polish interactive floor market! Combine your SmartFloor interactive floor with a dedicated table and enjoy a versatile platform for games, education, entertainment and revalidation. The release of the new interactive table mode feature is a step into the future of entertainment and interaction. This innovative functionality allows users to use the same device both as an interactive floor and as a gaming table. As a result, the possibilities for entertainment and interaction are significantly expanded, opening the door to new experiences and enhancing the creative potential for users.

Key features:

- new type of interaction - by hand, using a new package of 12 games
- a new playing surface - the table
- special table projection mode - automatic calibration, selected package selection, change of parameters of camera operation
- dedicated table - size of the table adjusted to the projection area, anti-reflective surface of the tabletop levelling the amount of light reflected on the surface, approachable from all sides
- 4 working areas adapted to the table system
- possibility of play for people with mobility impairments
- possibility of play for the elderly - a more comfortable and less demanding form of play using the interactive floor



SEE THE VIDEO!



Dedicated projection table 160 x 150 cm

The dedicated table size of 160 x 150 cm allows the projection to be displayed to perfectly fit the available space, as well as making full use of the working areas on each side of the table. In addition, the anti-reflective coating of the tabletop guarantees a clear projection image. In addition, the table's ability to be folded and stowed away, in tandem with the mobile stand of the SmartFloor interactive floor, allows us to use the solution anywhere. A dedicated handle is added to the table, compatible with the stand, so they can be connected together. In this version, you can turn this interactive table back into an interactive floor very quickly and easily. A quick calibration (up to 10 seconds) is all it takes to move the interactive area back to the floor, using movement and light pens for play.



Arcade Game Champions games pack

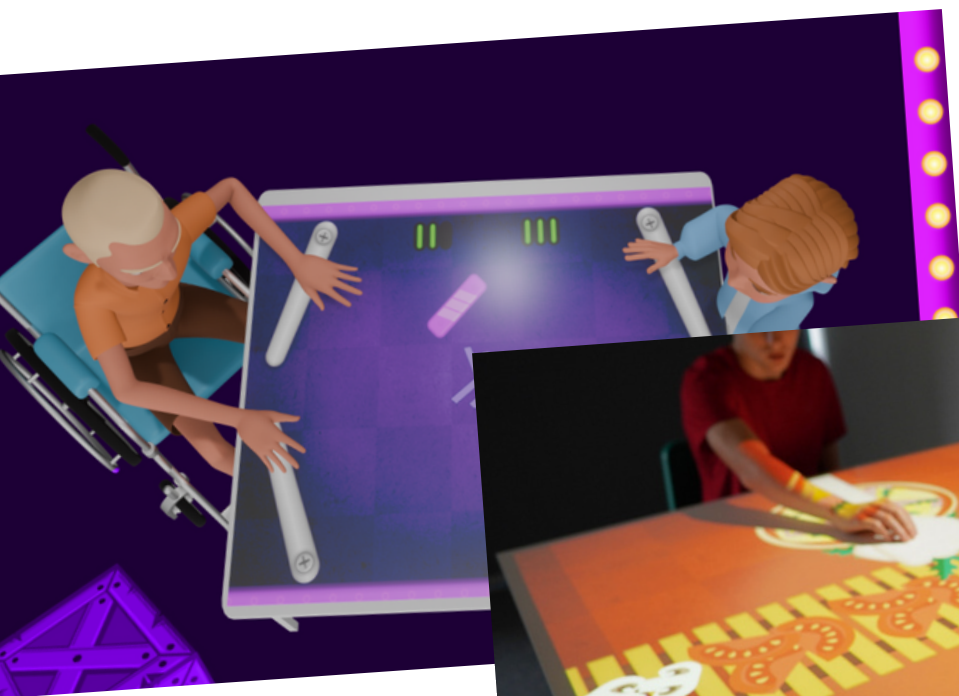
The market's first collection of 12 hand-controlled games. Designed specifically for interactive tabletop projection. The form of the games encourages social interaction, fosters healthy competition and promotes cognitive skills. The authors of the package have aimed to address the growth needs of schoolchildren and seniors, focusing primarily on supporting motor and sensory skills during organised safe games and activities.



MOTIONCUBE

Want to gain access to even more educational games and activities? No problem! By activating your account in the MotionCube shop, you will gain the ability to freely browse, filter and purchase new educational apps!

www.motioncube.io



[/SmartFloorEduPL](https://www.facebook.com/SmartFloorEduPL)



[/smart_floor](https://www.instagram.com/smart_floor)



[/www.smartfloor.edu.pl](http://www.smartfloor.edu.pl)



+48 (91) 488 51 51



kontakt@smartfloor.edu.pl